



QRG Air Nostrum CRJ1000

Rev 02. Effective Date: 23/06/2022

Access to ANE Ground Ops Manuals

<https://portalyw.airnostrum.es:81/handlingyw/>

Click Here!

Only for Charter flights

→ User: 99999CHR

→ Password: Airnostrum14

Manuals



1 <https://portalyw.airnostrum.es:81/handlingyw/>

Seguridad de Windows

Inicie sesión para obtener acceso a este sitio

Autorización requerida por https://portalyw.airnostrum.es:81

99999CHR

••••••••

Dominio: AIRNOSTRUM

Más opciones

Aceptar Cancelar



2 Airport: CHR Handling Agent: 99999 // VUELOS CHARTER

- REVISAR PESTAÑA GOIS PARA VER ACTUALIZACIONES GOM / REVIEW GOIS TAB TO CHECK GOM UPDATES
- GOMEN - TABLE OF CONTENTS
- ▶ AIR NOSTRUM MANUALS AND PROCEDURES
 - ▶ HIBERNIAN MANUALS AND PROCEDURES
 - ▶ MEL AIR MANUALS AND PROCEDURES
 - ▶ ANNOUNCEMENTS
 - ▶ STATION PRINTED DOCUMENTS



3 Airport: CHR Handling Agent: 99999 // VUELOS CHARTER

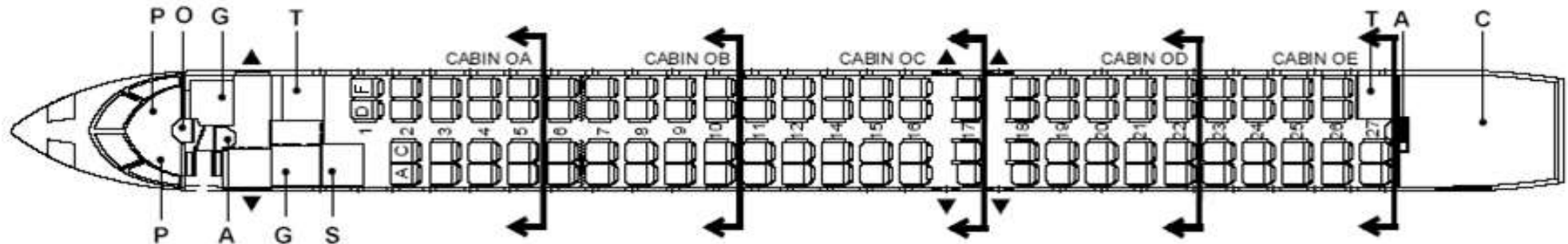
REVISAR PESTAÑA GOIS PARA VER ACTUALIZACIONES GOM / REVIEW GOIS TAB TO CHECK GOM UPDATES

GOMEN - TABLE OF CONTENTS

- ▼ AIR NOSTRUM MANUALS AND PROCEDURES
 - ▶ Operations Manual (OM)
 - ▶ Ground Operations Manual EN-GOM (ed14) (effectivity 10022021)
 - ▶ Ground Operations Instructions (GOIs)
 - ▶ Aviation Emergency Manual
 - ▶ Annex VI Ground Handling Responsibilities
 - ▶ Security Management Manual (SeMM)
 - ▶ Cargo Manual
 - ▶ Air Nostrum Punctuality & Regularity Standards
 - ▶ Procedimiento Solicitud de Material
 - ▶ AHM
 - ▶ SMS - Providers
 - ▶ Quick Reference
 - ▶ HIBERNIAN MANUALS AND PROCEDURES
 - ▶ MEL AIR MANUALS AND PROCEDURES
 - ▶ ANNOUNCEMENTS
 - ▶ STATION PRINTED DOCUMENTS
- ▼ AIR NOSTRUM MANUALS AND PROCEDURES
 - ▼ Operations Manual (OM)
 - ▶ OMA 8.2.1. Fuelling Procedures
 - ▶ OMA 8.2.2. Aircraft, Passenger and Cargo Handling Safety
 - ▶ OMA 8.2.3. Procedures for the Refusal of Boarding
 - ▶ OMA 8.2.4. De-Icing and Anti-Icing on the Ground
 - ▶ OMA 9.1. Dangerous Goods
 - ▶ OMA 9.2. Conditions under which Weapons, Munitions of War and Sporting Weapons May Be Carried
 - ▶ OMB 7. Loading ATR72600
 - ▶ OMB 7. Loading CRJ200
 - ▶ OMB 7. Loading CRJ900
 - ▶ OMB 7. Loading CRJ1000
 - ▶ MOB 6. Carga ATR72600
 - ▶ MOB 6. Carga CRJ200
 - ▶ MOB 6. Carga CRJ900
 - ▶ MOB 6. Carga CRJ1000

Cabin configuration– 100 passengers 2 crew seats

A	=	FLIGHT ATTENDED SEAT
C	=	CARGO COMPARTMENT
◀	=	EMERGENCY EXIT
G	=	GALLEY
O	=	OBSERVER SEAT
P	=	PILOT SEAT
S	=	STOWAGE
T	=	TOILET



UMNR

Seat UMNRs as per operating airline policy and do not assign seats in emergency exit rows.

-All flights: **max 4***

INFANTS

Transport Limitations

Whenever necessary oxygen masks, Kangaroo seat belts and infant live vests are available on board, the maximum number of babies on board is:

-10% capacity of the aircraft.

PRM

When the number of PRM is considered a significant proportion respect the total number of passengers aboard, the maximum quantity of PRM shall not exceed the number of people able to attend them during an emergency evacuation. Nevertheless the company may reserve its right to impose stronger restrictions to the ones described previously.

FLEET SEATS PROHIBITED (Emergency Exits) : CRJ 1000 17A/C/D/F; 18 A/C/D/F

With the purpose of allowing an easier access to floor level exits wheelchair users (WCHC and WCHS) will preferably be assigned the following seats: CRJ1000 8A/F; 9A/F; 10A/F

Ambulift Procedure

. Service door

The Ambulift procedure by the service door it will be only used for CRJ fleet (CRJ200, CRJ900 and CRJ1000).

. Passenger Door

Ambulift by passenger door it could be used for all Air Nostrum fleet (CRJ200, CRJ900, CRJ1000 and ATR).

AVIH

Animals in Hold are transported as checked baggage in the aircraft hold and travel in accordance with IATA Live Animal Regulations, and operator acceptance policies.

- a) Domestic animals such as dogs, cats, birds, etc.
- b) Other small warm-blooded animals, such as guinea pigs, hamsters, rabbits, etc.
- c) Apply operator acceptance procedures with local customs requirements, animal age and health requirements.

Note: Domestic animals of unusual size or wild animals, reptiles must be transported as cargo.

As a general rule, live animals should be transported in cargo compartments. The commander will be advised whenever live animals are being boarded in these compartments.

In the CRJ1000 is forbidden to place AVIH in hold 4/5.

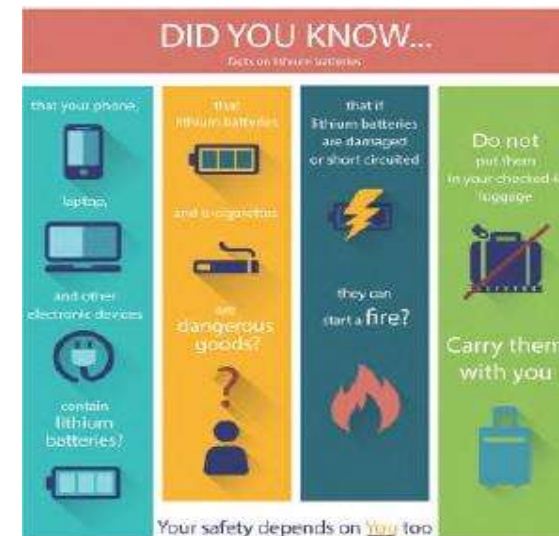
PETC

- Pets, such as dogs, cats, birds, etc., that comply with the legal and documentation constraints may be accepted as Animals Vivant in Hold (AVIH) or as Pets in Cabin (PETC, up to 8 kg). In IATA's regulations for the transport of live animals, AIR NOSTRUM has identified several "Company Variations", the first of which is the ban on transporting foul-smelling animals such as the hyenas, jackals and mustelids (e.g. weasels, polecats, pine martens, mink, skunks, etc.) in passenger aircraft and reptiles, which passengers sometimes try to carry on as pets.
- Under no circumstances may passengers travelling with animals in the cabin book or occupy an emergency seat.

Passenger Services / Reminder



- Passenger's rights notification in case of delay, overbooking and/or cancellation.
- TIMATIC shall be verify regarding passenger's final destination
- Dangerous Goods information shall be displayed at the check-in and boarding gate.
 - Hidden Dangerous goods: before tagging the hand Baggage as DAA, the ground service provider must ask the following questions to check that forbidden items are not carried :
 - Lithium batteries o spares?
 - Matches ?
 - Lighter ?
 - Electronic cigarettes?



To learn more, please check your airline's information on dangerous goods

Passenger Services / Provision for Dangerous Goods Carried by Passenger



The pilot-in-command must be informed of the location				
Permitted in or as carry-on baggage				
Permitted in or as checked baggage				
The approval of the operator is required				
Alcoholic beverages, when in retail packagings, containing more than 24% but not more than 70% alcohol by volume, in receptacles not exceeding 5 L, with a total net quantity per person of 5 L.	NO	YES	YES	NO
Ammunition, securely packaged (in Div. 1.4S, UN 0012 or UN 0014 only), in quantities not exceeding 5 kg gross weight per person for that person's own use. Allowances for more than one person must not be combined into one or more packages.	YES	YES	NO	NO
Avalanche rescue backpack, one (1) per person, containing cartridges of compressed gas in Div. 2.2. May also be equipped with a pyrotechnic trigger mechanism containing no more than 200 mg net of Div. 1.4S. The backpack must be packed in such a manner that it cannot be accidentally activated. The airbags within the backpacks must be fitted with pressure relief valves.	YES	YES	YES	NO
Baggage with installed lithium batteries non-removable batteries exceeding 0.3 g lithium metal or 2.7 Wh.	FORBIDDEN			
Baggage with installed lithium batteries:	NO	YES	YES	NO
– non-removable batteries. Batteries must contain no more than 0.3 g lithium metal or for lithium ion must not exceed 2.7 Wh;				
– removable batteries. Batteries must be removed if baggage is to be checked in. Removed batteries must be carried in the cabin.				
Batteries, spare/loose, including lithium batteries, non-spillable batteries, nickel-metal hydride batteries and dry batteries (see 2.3.5.8) for portable electronic devices must be carried in carry-on baggage only. Articles which have the primary purpose as a power source, e.g. power banks are considered as spare batteries. These batteries must be individually protected to prevent short circuits. Lithium metal batteries: the lithium metal content must not exceed 2 g (see 2.3.5.8.4). Lithium ion batteries: the Watt-hour rating must not exceed 100 Wh (see 2.3.5.8.4). Each person is limited to a maximum of 20 spare batteries.	NO*	NO	YES	NO
*The operator may approve the carriage of more than 20 batteries.				
Non-spillable batteries: must be 12 V or less and 100 Wh or less. Each person is limited to a maximum of 2 spare batteries (see 2.3.5.8.5)				
Camping stoves and fuel containers that have contained a flammable liquid fuel, with empty fuel tank and/or fuel container (see 2.3.2.5 for details).	YES	YES	NO	NO
Chemical Agent Monitoring Equipment, when carried by staff members of the Organization for the Prohibition of Chemical Weapons on official travel (see 2.3.4.4).	YES	YES	YES	NO
Disabling devices such as mace, pepper spray, etc. containing an irritant or incapacitating substance are forbidden on the person, in checked and carry-on baggage.	FORBIDDEN			
Dry ice (carbon dioxide, solid), in quantities not exceeding 2.5 kg per person when used to pack perishables not subject to these Regulations in checked or carry-on baggage, provided the baggage (package) permits the release of carbon dioxide gas. Checked baggage must be marked "dry ice" or "carbon dioxide, solid" and with the net weight of dry ice or an indication that there is 2.5 kg or less dry ice.	YES	YES	YES	NO

e-cigarettes (including e-cigs, e-pipes, other personal vaporizers) containing batteries must be individually protected to prevent accidental activation (see 2.3.5.8.2).	NO	NO	YES	NO
Electro shock weapons (e.g. Tasers) containing dangerous goods such as explosives, compressed gases, lithium batteries, etc. are forbidden in carry-on baggage or checked baggage or on the person.	FORBIDDEN			
Fuel cells containing fuel, powering portable electronic devices (e.g. cameras, cellular phones, laptop computers and camcorders), see 2.3.5.9 for details.	NO	NO	YES	NO
Fuel cell cartridges, spare for portable electronic devices, see 2.3.5.9 for details.	NO	YES	YES	NO
Gas cartridges, small, non-flammable containing carbon dioxide or other suitable gas in Division 2.2. Up to two (2) small cartridges fitted into a self-inflating personal safety device, intended to be worn by a person, such as a life jacket or vest. Not more than two (2) devices per passenger and up to two (2) spare small cartridges per device, not more than four (4) cartridges up to 50 mL water capacity for other devices (see 2.3.4.2).	YES	YES	YES	NO
Gas cylinders, non-flammable, non-toxic worn for the operation of mechanical limbs. Also, spare cylinders of a similar size if required to ensure an adequate supply for the duration of the journey.	NO	YES	YES	NO
Hair styling equipment containing a hydrocarbon gas cartridge, up to one (1) per passenger or crew-member, provided that the safety cover is securely fitted over the heating element. This hair styling equipment must not be used on board the aircraft. Spare gas cartridges for such hair styling equipment are not permitted in checked or carry-on baggage.	NO	YES	YES	NO

Passenger Services / Provision for Dangerous Goods Carried by Passenger



The pilot-in-command must be informed of the location				
Permitted in or as carry-on baggage				
Permitted in or as checked baggage				
The approval of the operator is required				
Insulated packagings containing refrigerated liquid nitrogen (dry shipper), fully absorbed in a porous material containing only non-dangerous goods.	NO	YES	YES	NO
Internal combustion or fuel cell engines , must meet A70 (see 2.3.5.12 for details).	NO	YES	NO	NO
Lithium Batteries: Portable electronic devices (PED) containing lithium metal or lithium ion cells or batteries , including medical devices such as portable oxygen concentrators (POC) and consumer electronics such as cameras, mobile phones, laptops and tablets (see 2.3.5.8). For lithium metal batteries the lithium metal content must not exceed 2 g and for lithium ion batteries the Watt-hour rating must not exceed 100 Wh. Devices in checked baggage must be completely switched off and must be protected from damage. Each person is limited to a maximum of 15 PED. *The operator may approve the carriage of more than 15 PED.	NO*	YES	YES	NO
Lithium batteries, spare/loose, including power banks, see Batteries, spare/loose				
Lithium battery-powered electronic devices. Lithium ion batteries for portable (including medical) electronic devices, a Wh rating exceeding 100 Wh but not exceeding 160 Wh. For portable medical electronic devices only, lithium metal batteries with a lithium metal content exceeding 2 g but not exceeding 8 g. Devices in checked baggage must be completely switched off and must be protected from damage.	YES	YES	YES	NO
Lithium batteries, spare/loose with a Watt-hour rating exceeding 100 Wh but not exceeding 160 Wh for consumer electronic devices and PMED or with a lithium metal content exceeding 2 g but not exceeding 8 g for PMED only. Maximum of two spare batteries in carry-on baggage only. These batteries must be individually protected to prevent short circuits.	YES	NO	YES	
Matches, safety (one small packet) or a small cigarette lighter that does not contain unabsorbed liquid fuel, other than liquefied gas, intended for use by an individual when carried on the person. Lighter fuel and lighter refills are not permitted on one's person or in checked or carry-on baggage.	NO	ON ONE'S PERSON		
Note: "Strike anywhere" matches, "Blue flame" or "Cigar" lighters or lighters powered by a lithium battery without a safety cap or means of protection against unintentional activation are forbidden (see 2.3.5.8.4(e)).				
Mobility Aids: Battery-powered wheelchairs or other similar mobility devices with non-spillable wet batteries, nickel-metal hydride batteries or dry batteries , (see 2.3.2.2).	YES	YES	NO	
Mobility Aids: Battery-powered wheelchairs or other similar mobility devices with spillable batteries or with lithium ion batteries (see 2.3.2.3 and 2.3.2.4 for details).	YES	YES	NO	
Mobility Aids: Battery-powered wheelchairs or other similar mobility devices with lithium ion batteries where the battery is specifically designed to be removed, the battery must be carried in the cabin (see 2.3.2.4.3(b)2. for details).	YES	NO	YES	
<p>The total net quantity of non-radioactive medicinal or toiletry articles and non-flammable, non-toxic (Division 2.2) aerosols must not exceed 2 kg or 2 L and the net quantity of each single article must not exceed 0.5 kg or 0.5 L. Release valves on aerosols must be protected by a cap or other suitable means to prevent inadvertent release of the contents.</p> <p>Oxygen or air, gaseous, cylinders required for medical use. The cylinder must not exceed 5 kg gross weight.</p> <p>Note: Liquid oxygen systems are forbidden for transport.</p> <p>Permeation devices, must meet A41 (see 2.3.5.13 for details).</p> <p>Radioisotopic cardiac pacemakers or other devices, including those powered by lithium batteries, implanted into a person or fitted externally.</p> <p>Security-type equipment (see 2.3.2.6 for details).</p> <p>Security-type attaché cases, cash boxes, cash bags, etc. incorporating dangerous goods, such as lithium batteries and/or pyrotechnic material, except as provided in 2.3.2.6 are totally forbidden. See entry in 4.2-List of Dangerous Goods.</p> <p>Specimens, non-infectious packed with small quantities of flammable liquid, must meet A180 (see 2.3.5.11 for details).</p> <p>Thermometer, medical or clinical, which contains mercury, one (1) per person for personal use, when in its protective case.</p> <p>Thermometer or barometer, mercury filled carried by a representative of a government weather bureau or similar official agency (see 2.3.3.1 for details).</p>				
	YES	YES	YES	YES
	NO	YES	NO	NO
	NO	ON ONE'S PERSON		
	YES	YES	NO	NO
	NO	YES	YES	NO
	NO	YES	NO	NO
	YES	NO	YES	YES

a) Guns, firearms and other devices that discharge projectiles

devices capable, or appearing capable, of being used to cause serious injury by discharging a projectile), including:

- firearms of all types, such as pistols, revolvers, rifles, shotguns,
- toy guns, replicas and imitation firearms capable of being mistaken for real weapons,
- component parts of firearms, excluding telescopic sights,
- compressed air and CO2 guns, such as pistols, pellet guns, rifles and ball bearing guns,
- signal flare pistols and starter pistols,
- bows, cross bows and arrows,
- harpoon guns and spear guns,
- slingshots and catapults

b) Stunning devices.

devices designed specifically to stun or immobilise, including:

- devices for shocking, such as stun guns, tasers and stun batons,
- animal stunners and animal killers,
- disabling and incapacitating chemicals, gases and sprays, such as mace, pepper sprays, capsicum sprays, tear gas, acid sprays and animal repellent sprays

c) Objects with a sharp point or sharp edge.

objects with a sharp point or sharp edge capable of being used to cause serious injury, including:

- items designed for chopping, such as axes, hatchets and cleavers
- ice axes and ice picks,
- razor blades,
- box cutters,
- knives with blades of more than 6 cm,
- scissors with blades of more than 6 cm as measured from the fulcrum,
- martial arts equipment with a sharp point or sharp edge,
- swords and sabres.

d) Workmen's tools.

tools capable of being used either to cause serious injury or to threaten the safety of aircraft, including:

- crowbars,
- drills and drill bits, including cordless portable power drills,
- tools with a blade or a shaft of more than 6 cm capable of use as a weapon, such as
- screwdrivers and chisels,
- saws, including cordless portable power saws,
- blowtorches,
- bolt guns and nail guns.

e) Blunt instruments

objects capable of being used to cause serious injury when used to hit, including:

- baseball and softball bats,
- clubs and batons, such as billy clubs, blackjacks and night sticks,
- martial arts equipment.

f) Explosives and incendiary substances and devices.

explosives and incendiary substances and devices capable, or appearing capable, of being used to cause serious injury or to pose a threat to the safety of aircraft, including:

- ammunition,
- blasting caps,
- detonators and fuses,
- replica or imitation explosive devices,
- mines, grenades and other explosive military stores,
- fireworks and other pyrotechnics,
- smoke-generating canisters and smoke-generating cartridges,
- dynamite, gunpowder and plastic explosives.

☐ Green light policy

Unless this is explicitly indicated by the Lessee the Air Nostrum crews will apply the green light policy, based on the following criteria:

Boarding	STD-30 minutes in remote stand STD-25 minutes in contact (W/WO)	Crew applies green light policy
Pax ready to board on apron Gate check-in closure	STD-20 STD-10	
Hold & Passengers door closed	STD-05	

❑ DAA procedure in use

- knock on pax door before starting to unload DAA baggage
- Bags labelled at gate and passenger informed to read the tag.
- On tarmac ramp staff is in charge of removing/labelling the bags before passengers get on the aircraft
- DAA will be loaded in holds 4 and 5. Loading should always begin in hold 4, priority DAAs will be loaded last, always in hold 5. Unloading of DAA luggage must always start with holds 5.
- It is IMPORTANT that ALWAYS the baggage is removed and/or labeled with “DAA” tags, the boarding and/or check-in agent that proceed to label, indicates the passenger the pickup location of these in his/her next destination. The handling agent must ask the following questions in order to check that none of the forbidden items in checked Baggage are carried.
 - ✓ Lithium batteries as spare
 - ✓ Matches
 - ✓ Lighter
 - ✓ Electronic cigarette
 - ✓ Electronic devices on